

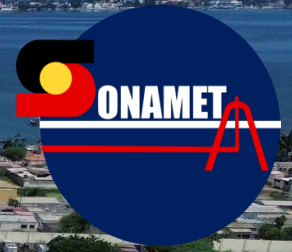


FACILITIES

Angola

#### Our Values

- Our People
- Safety & Environment
- Client Focus
- Commitment to Excellence
- Community Involvement



# Sonamet Spoolbase

## Site Info

*Full specification overleaf*

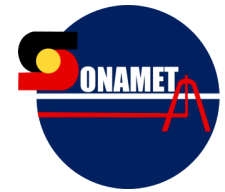
Sonamet Spoolbase is located in Lobito's Bay which is 500 km south of Luanda, in Benguela. It is next to the Lobito Port, one of the most important ports of the West African coast. The base runs 1039 m length, covering a total area of 32,500m<sup>2</sup>.

## Fast Facts

- Quay 2: 143m long, 10m draft, 6,000mT capacity, 2,000mT for load out with cranes
- Stalk rack area 700m - 918m
- Single / Pipe-in-pipe
- Firing line 1-8 work stations
- Designed to service deepwater market



## Sonamet Spoolbase



### Storage and Handling

- Single joint storage preferred method uses wooden spacers and wedged up to 6 high.
- Pipe storage area: 9000m<sup>2</sup> - One storage area
- Stalk handling is performed by excavators with roller boxes.
- Stalk pulling during production is performed by front loader or similar, on demand by the project.
- Stalk Rack Length: 996-998m.
- Stalk Rack Width: Main rack – 10m width no Side rack.

### Firing Line 1

Fabrication hall: 138m long / 8m width over the Welding area.  
Single firing line with 8 work stations designed for single joints.  
Bead stall/root station fitted with Selmers high precision line-up table.

### Spooling Line

Spooling Line length (from end of racks to last roller): 918m  
Tie-in shed extended for SCR weld repairs and FJC using Extruder or PU, similar to the process used for the main production line. Field Joint Coating (FJC) tie-in shed is close to quay allowing simultaneous tie-ins of welding and FJC.



### Stalk-rack Storage Capacity

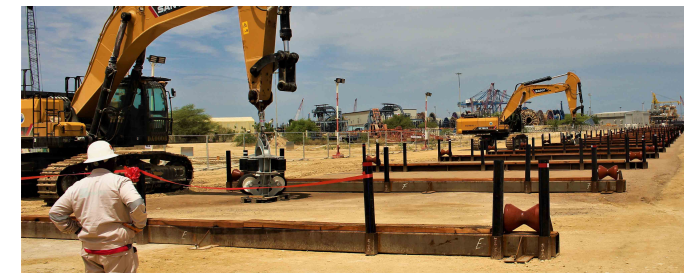
33 stalks storage.  
(12", 50mm PP coating).

### Vessel Berthing

- Vessel moored in mediteranean mode using anchors in Lobito bay and bollards at quay side.
- Vessels are positioned 8m from last roller.
- Height above water level of the last fleeting roller is approximately 3m.
- Tidal variations are between 0.5m and 1.5m.

### Facilities at Quay Side

- Project Material Storage Area at Quay Side: 1,100 m<sup>2</sup> (in preparation for spooling).
- Causeway with Fleeting Rollers to absorb pipe movement avoiding to damage stalk coating.
- Shore Winch used to back tension stalk tail and to remove contingency pipe from the vessel.
- Pipe Clamp used to secure the pipe from any Vessel movement that may cause problems during the Tie-in weld.



### Contact Details

Sonamet Lobito  
Rua 1° de Dezembro,  
Lobito - Provincia de Benguela,  
Caixa postal n°479, Angola

Tel: (244) 272 22 20 17



[info@sonamet.com](mailto:info@sonamet.com)



[www.sonamet.com](http://www.sonamet.com)

